

# Notice to Fish Harvesters

EKME: 4072260

## CONSERVATION AND HARVESTING PLAN FOR THE SOUTHERN GULF OF ST. LAWRENCE FALL HERRING FISHERIES

MONCTON – Fisheries and Oceans Canada (DFO) announced today the fall Southern Gulf of St. Lawrence herring (Herring Fishing Areas 16A to G and 17) Conservation and Harvesting Plan.

For the fall herring fishery, given that the abundance indicators show a decrease of the fall biomass, the TAC will be set at 22,500 t for 2019. This decrease in the TAC for the fall herring fishery is necessary to promote stock rebuilding to the Healthy Zone.

### Distribution of Fall Quotas (metric tonnes)

Fleet	2019
Inshore fleet Areas 16A-16G	17,114
Inshore fleet in Area 17	225
Gulf large purse seine fleet	5,161
<b>TOTAL</b>	<b>22,500</b>

### Inshore fleet quota distribution (metric tonnes) in Herring Fishing Areas 16A to 16G and 17

Herring Fishing Area	2019
Reserve (initially distributed)*	1256
	<b>Basic allocation including the distribution of reserve</b>
16A	135
16B	8,136
16C	2,699 (C&E)
16D	563
16E	see above
16F	2,790
16G	2,790
17	225

\* For more details on inshore quota distribution rules, please refer to Annex 1.

### **Large Purse Seine fleet fishery on “the Edge” (4T)**

This fishery, designed to target fall spawners during the month of May and June, will continue in the 2019 fishing seasons with the same parameters and management measures as in 2018. This fleet is authorized to fish their fall herring quota along the Edge in 4T during the spring season (May-June) using purse seine gear (Chart 4). A small fish protocol that reduces the remaining available quota according to the percentage of herring smaller than 23.5 cm (fork length) in the catch will be maintained. As in 2018, management measures will include: 20% independent at-sea observer coverage, 100% dockside monitoring, and mandatory vessel monitoring system to monitor this fishery. (See annex 2 for all details).

### **Quota reconciliation**

Quota reconciliation in the Gulf herring fisheries will continue to be applied in 2019. Quota overruns from the 2019 fisheries will be deducted, in equal amounts, from the quota of the following year in the same Herring Fishing Area and season. Quantities will be rounded to +/- 10 kg.

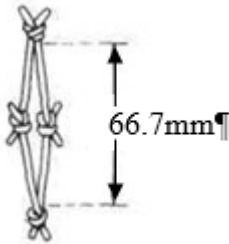
### **Carry forward of quota**

The Department continue with the quota carry forward. Quota carry forward combined with the quota reconciliation program already in place for this fishery will provide more flexibility to managers and fleet representatives when determining the strategy for the season’s last night of fishing.

### **Mesh size measurement**

Mesh size as applicable in the herring fishery is defined in the *Atlantic Fishery Regulations* as follow:

- *mesh size* means, in respect of netting the total length of the twine measured along two contiguous sides of a single mesh, including the distance across the knot joining those sides but not including any other knots,
- *See diagram below*



Please note that the measurement is taken with the net pulled tight which would be harder to display in the diagram.

## INFORMATION

Ben Moore Resource Management Fisheries and Oceans Canada Charlottetown, PE (902) 370-7094	Sandra Comeau Resource Management Fisheries and Oceans Canada Tracadie, NB (506) 395-7765	Alan Dwyer Resource Management Fisheries and Oceans Canada Antigonish, NS (902) 735-7114
Caroline Leclerc Resource Management Fisheries and Oceans Gaspé, QC (418) 368-5559	Josée Richard Resource Management Fisheries and Oceans Cap-aux-Meules, QC (418) 986-2095	Pierre Mallet Resource Management Fisheries and Oceans Canada Moncton, NB (506) 851-7792
Antoine Rivier Resource Management Fisheries and Oceans Québec, QC (418) 640-2636		

## **2019 Conservation Harvesting Plan**

### **Fall inshore gillnet fishery**

- A Dockside Monitoring Program (DMP) and weekend closures are a requirement in most fishing areas. (See Table 1)
- Gillnets are restricted to a maximum of 150 fathoms in length and 125 mesh deep with the exception of 16F which will be 100 fathoms in length, 16B which will be 125 fathoms in length and 16G Southside which will be 100 mesh deep. The minimum mesh size in all areas is 66.7 mm except 63.5 mm in 16A.
- Tagging of all gillnets in all HFAs is required in 2019, with one tag for every 15 fathoms of net.
- Other management measures are outlined in Table 1.

### **Baie des Chaleurs (HFA 16 B) fall fishery**

#### Early Fishery

As in previous years, there is an early fishery in July (July 1-31), with a maximum of 215 t. Any uncaught quota will be transferred to the main roe fishery.

#### Main roe fishery

The season will open on August 18, 2019 with a quota of 7,685t.

The fishery will be closed weekdays between 13:00 and 19:00 (Atlantic Daylight Time) and every weekend from 13:00 Friday until 19:00 Sunday (Atlantic Daylight Time). No nets will be allowed in the water during these closed periods.

The use of a maximum of one (1) set of nets only will be authorized.

Fish harvesters will be limited to one landing per day, with a maximum weight of 10,206 kg.

#### Small Seiners

The purse seine fishery will be allowed in the Baie des Chaleurs from July 1 until July 31, 2019, and from September 1 until December 31, 2019 except west of a line between Grande-Anse (NB) and Paspébiac (QC) in order to limit catches of spring spawners.

The purse seine fishery will continue to be subject to a small fish protocol.

### **Summer fishery in a portion of HFA 16E**

A summer herring fishery (starting on July 1, 2019) is authorized in a portion of HFA 16E with a set quota of 500 t. The objective of the summer fishery is to provide some fishing opportunities to herring fish harvesters who have had a very limited or non-existent fishery in the spring.

To allow for a reasonable distribution of the resource among fish harvesters, the fishery will only open in the waters inside a line from Fagan Point, N.B., to Cape Egmont, P.E.I., and the lobster line separating Lobster Fishing Area 25 and 26A from Victoria Harbour, P.E.I. to Pugwash, N.S. (Chart 1). The remainder of 16E remains closed until the opening of the roe fishery.

Fish harvesters will have to choose between a summer fishery or a fall fishery. Those opting for a summer fishery will be required to request summer herring licence conditions by calling 1-855-634-2355 or by e-mail at [Gulfinfogolfe@dfo-mpo.gc.ca](mailto:Gulfinfogolfe@dfo-mpo.gc.ca) before being authorized to participate in the summer fishery. The fishery will open at noon (12:00 p.m.), Atlantic Daylight Time, on July 1, 2019.

Any uncaught quota from the summer fishery will be transferred to the competitive quota for both groups A and B of the main roe fishery.

### **Fishermen's Bank and Northeast PEI (HFA 16G) summer/fall fishery**

The summer and fall fishery in HFA 16G will occur in two distinct periods and zones within HFA 16G (Northside and Southside) to allow for a reasonable distribution of the resource among fish harvesters.

A summer fishery will commence on July 16, 2019 for both Northside and Southside of HFA 16G and fish harvesters will fish against a reserve quota of 650 t until the main roe fishery opens, or until the quota is caught. When the main roe fall fishery opens, September 8, 2019 these fish harvesters will fish against the remaining 16G quota but must remain within the defined areas, until the fishery closes. Any remaining quota after September 22, 2019 will be accessible to all harvesters in their chosen zone in a late fishery.

### **Purse seine fishery for vessel greater than 19.81 meters**

- A cap on fall spawners of 2,580 t in the Baie des Chaleurs will be implemented.
- Catches of fall spawners during the spring fishery along the edge of the Laurentian channel will be counted towards the large purse seiner fall quota.
- The purse seine fishery for vessel greater than 19.8 meters will be allowed in the Baie des Chaleurs from July 1 until July 31, 2019 and from September 1 until December 31, 2019, except west of a line between Grande-Anse (NB) and Paspébiac (QC) in order to limit catches of spring spawners.
- The purse seine fishery for vessel greater than 19.8 meters will be closed from January 1 to December 31 in a portion of HFA 16G off the northeast coast of PEI (Chart 2)
- Uncaught quota from the spring will be transferred to the fall, and access to the northern portion of 4Vn (HFA 17) will be authorized starting November 1. However, the amount and the conditions under which the fishery will take place in 4Vn (HFA 17) will be addressed in the Maritimes Region Herring Management Plan.
- All vessels must be equipped with an operational Vessel Monitoring System during fishing activities.
- There will be a minimum of 20% at-sea observer coverage during fishing activities.
- The purse seine fishery for vessel greater than 19.8 meters will continue to be subject to a small fish protocol.

**TABLE 1**

<b>FALL INSHORE MANAGEMENT MEASURES BY HFA – 2019</b>						
<b>Fishing Area</b>	<b>DMP/CMP</b>	<b>Quota (t)</b>	<b>Period</b>	<b>Net (mesh size / deep / length)</b>	<b>Closures</b>	<b>Trip Limit</b>
16A – Île Verte	CMP - declaration of 100% of catches through the radio and dockside verification for 25% of landings	27	July 1 – Dec. 31	63.5 mm min / 125 mesh / 150 fathoms	None	One landing a day of 9,072 kg (20,000 lbs)
16B – Baie des Chaleurs (Fixed Gear)	100% DMP in N.B.	215 <sup>1</sup>	July 1-31	66.7 mm min / 125 mesh / 125 fathoms	None	One landing per day of 10,206 kg (22,500 lbs)
	CMP in P.Q. - declaration of 100% of catches through the radio and dockside verification for 25% of landings	7,685	Aug. 18 to September 20		13:00 Friday to 19:00 Sunday* 13:00 to 19:00 weekdays*	One landing per day of 10,206 kg (22,500 lbs)
Small Seiners	100% DMP	236	July 1 – July. 31 Sept. 1 – Dec. 31	N/A	N/A	N/A
16 C&E –Escuminac, Western PEI and northern GNS	100% DMP	261 <sup>2</sup>	July 1 – Aug. 24	66.7 mm min / 125 mesh / 150 fathoms	18:00 Friday to 18:00 Sunday*	One landing per day of 5,670 kg (12,500 lbs)
		405 (all)	Aug. 25		11:00 Friday to 19:00 Sunday 11:00-19:00 weekdays*	Total daily landings of 9,752 kg (21,500 lbs)
		1,017 (Group A)	After competitive fishery			
		1,017 (Group B)	After competitive fishery			
16D –Magdalen Islands	CMP - logbook, declaration of 100% of catches through the radio and dockside verification for 25% of landings	113	July 1 – Dec. 31	66.7 mm min / 125 mesh / 150 fathoms	None	None
16F – Pictou	100% DMP	50	July 10 – August 23	66.7 mm min / 125 mesh / 100 fathoms	12:00 Friday to 18:00 Sunday 12:00 to 18:00 weekdays	One landing per day, with daily limit self-managed by industry
		2,740	TBC			
16G –Northside (Chart 3)	100% DMP	650 for N+S	Summer fishery July 16 – Sept. 7	66.7 mm min / 125 mesh / 150 fathoms	15:00 Friday to 15:00 Sunday	Maximum 2 landings per day, with daily limit self-managed by industry
		20% of remaining quota (2,790 t + remaining in summer fishery)	Main roe fishery Sept. 8 – Sept. 21			Maximum 2 landings per day, with daily and weekly limit self-managed by industry

16G – Southside	100% DMP	650 for N+S	Summer fishery July 16 – Sept. 7	66.7 mm min / 100 mesh / 150 fathoms	15:00 Friday to 15:00 Sunday	Maximum 2 landings per day, with daily limit self-managed by industry
		80% of remaining quota (2,790 t + remaining in summer fishery	Main roe fishery Sept. 8 – Sept. 21			Maximum 2 landings per day, with daily and weekly limit self-managed by industry
16G – Fishermen’s Bank	100% DMP	Remaining quota	Late fishery Sept. 22 – Dec. 31	66.7 mm min Northside -125 mesh/150 fathoms Southside – 100 mesh/150 fathoms	15:00 Friday to 15:00 Sunday	Maximum 2 landings per day (Northside) and 1 landing per day (Southside), with consistent daily and weekly limit self- managed by industry

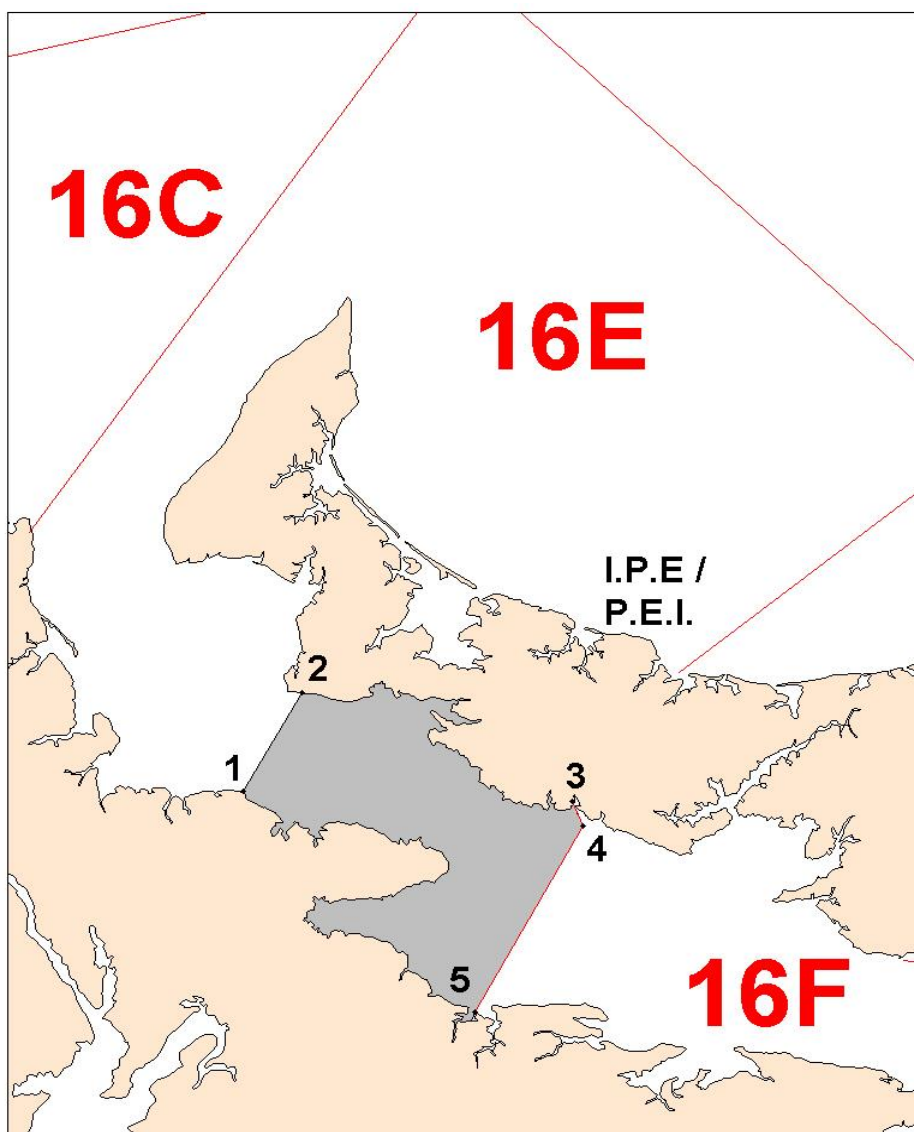
\* Atlantic Daylight Time

1 – If any quota remains from the early fishery, the remainder will be added to the roe fishery.

2 – A portion of 16E is open. Fish caught in that portion of 16E must be landed in that open area.

CHART 1

Summer fishery in a portion of HFA 16E



The summer fishery is to be conducted in that portion of 16E inside lines drawn from:

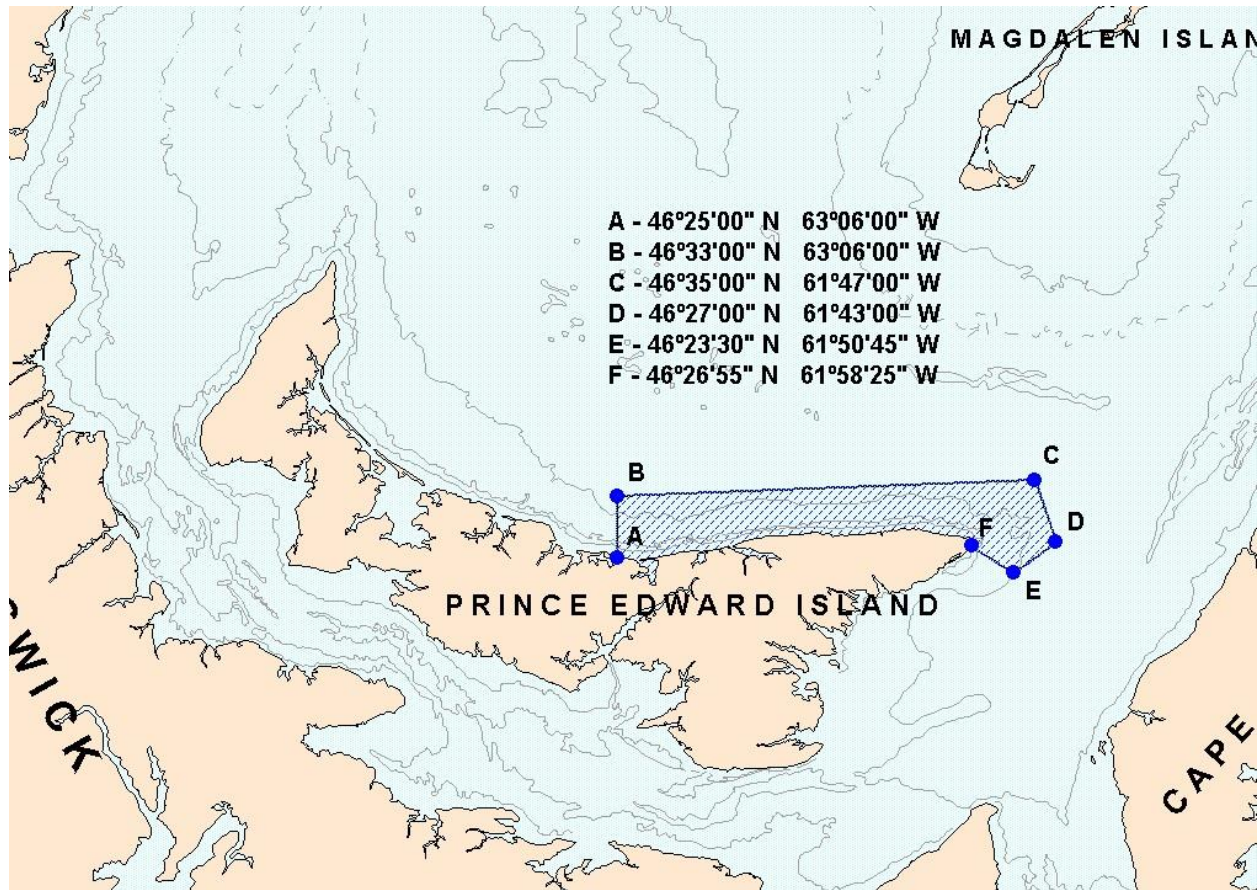
- |    |               |                             |
|----|---------------|-----------------------------|
| 1. | 46° 14' 00" N | 64° 14' 00" W (FAGAN POINT) |
| 2. | 46° 24' 00" N | 64° 06' 00" W (CAPE EGMONT) |
| 3. | 46° 12' 58" N | 63° 29' 26" W               |
| 4. | 46° 10' 35" N | 63° 28' 03" W               |
| 5. | 45° 51' 45" N | 63° 42' 42" W               |

Note: Those reference points are based on the geodesic system North American Datum 1927 (NAD27). Positions are expressed in degrees, minutes and seconds.



## CHART 2

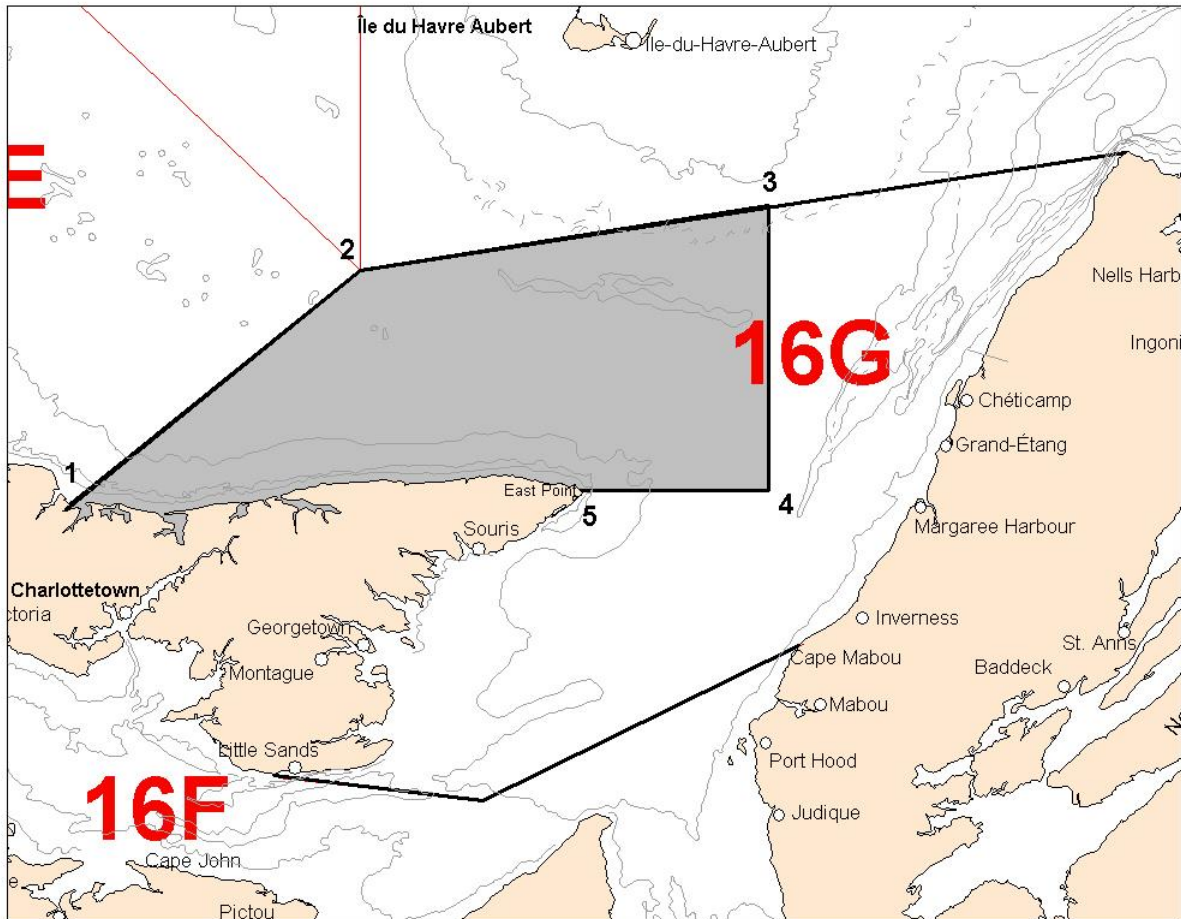
### Closure of the commercial inshore herring fishery off northeast PEI (April 1 to June 30) and of the large purse seiners herring fishery (year round)



Note: These reference points are based on the geodesic system North American Datum 1927 (NAD27)

### CHART 3

#### Northern portion of HFA 16G



The Northern portion of HFA 16G is defined as that portion of Herring Fishing Area 16G inside a line drawn from:

1. 46° 26' 00" N - 63° 15' 00" W
2. 46° 50' 00" N - 62° 32' 00" W
3. 46° 56' 42" N - 61° 30' 00" W
4. 46° 26' 55" N - 61° 30' 00" W
5. 46° 26' 55" N - 61° 58' 25" W (EAST POINT)

Note: Those reference points are based on the geodesic system North American Datum 1927 (NAD27). Positions are expressed in degrees, minutes and seconds.

## **Annex 1**

### **Fall Herring Reserve Distribution Rules for the 2019 sharing plan**

1. Each HFA will maintain its existing quota share at the end of the sharing plan.
2. Establishment of a 1,256 t reserve consisting of 80% of the HFA 16A allocation, 80% of the HFA 16D allocation, 80% of the HFA 17 allocation\* and 517 t of the HFA 16G allocation. (\*HFA 17 will provide 80% (180t) of its allocation on a risk management basis to supply the reserve)
3. The 1,256 t reserve will be initially allocated equally to HFA 16C&E (628 t) and HFA 16F (628 t).
4. The initial reserve distribution will be evaluated yearly to take in consideration any conservation concerns.
5. If the allocation for HFA 16A, 16D or 16G proves insufficient due to an apparent increase in abundance, the scenario will have to be revised.

Annex 1 (continued)

**FALL - SHARE SCENARIO BASED ON ESTABLISHMENT OF A RESERVE**  
 (2019 REFERENCE FIXED GEAR QUOTA = 17,114 t) TAC 22,500 t

Reserve=1,256t

HFA	CURRENT SHARE	Quota based on current shares	Area reduction for the 1,256t reserve	Quota after deduction of 1,954t reserve	Distribution of the reserve 1,954t	Basic allocation
16A	0.79%	135	108	27		27
16B	47.54%	8,136		8,136		8,136
16C&E	15.77%	2,699		2,699	628	3,327
16D	3.29%	563	450	113		113
16F	16.30%	2,790		2,790	628	3,418
16G	16.30%	2,790	517	2,273		2,273
17		225	180*	225		225
<b>TOTAL</b>	<b>100%</b>	<b>17,337</b>	<b>1,256</b>		<b>1,256</b>	

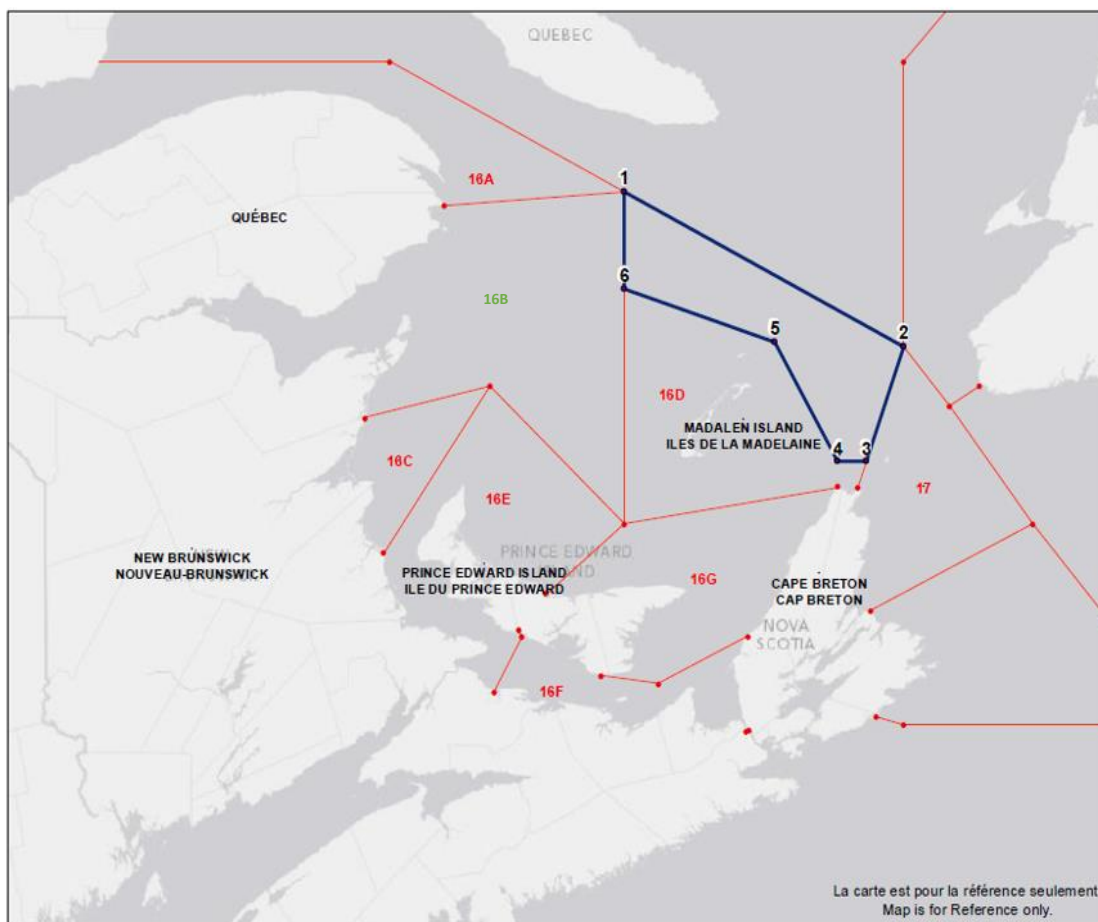
\*Risk managed

## **Annex 2**

### **Large Purse Seine Fleet Fishery on “the Edge” (4T)**

- All Gulf large purse seine licence holders are authorized to conduct fishing activities in the spring on the Edge of 4T (Chart 4). This herring fishery targets fall origins spawners
- The large purse seine fleet is authorized to fish their fall herring quota along the Edge in 4T during the spring season (May-June). Catches will be counted towards this quota.
- All vessels must be equipped with an operational Vessel Monitoring System during fishing activities.
- There will be 20% observer coverage at sea during the spring fishery along the Laurentian channel (“Edge fishery”).
- The maximum authorized by-catch of mackerel and capelin is set at 10% each of the directed species. The maximum authorized by-catch of groundfish is set at 5% of the directed species. Monitoring and sampling for by-catch species will be conducted at sea and the by-catch may be verified at dockside by fishery officers.
- A small fish protocol is in place to control the capture of juvenile herring during the purse seine fishery with a 100% dockside monitoring. The small fish protocol reduces the remaining available quota according to the percentage of herring smaller than 23.5 cm (fork length) in the catch.
- A scientific protocol has been developed to verify the spawning component of the herring caught. The proportion of spring and fall spawners in the catch will be determined by DFO. If at any time the amount of spring spawners in the catch reaches the spring allocation, the purse seine fishery will be closed until July 1.

**Chart 4: Area where the large purse seine fleet « Edge » fishery will occur (area in blue).**



Points	Latitude North	Longitude West
1.	48°42'00"N	62°32'00"W
2.	47°50'00"N	60°00'00"W
3.	47°11'06"N	60°20'07"W
4.	47°11'06"N	60°35'52"W
5.	47°51'33"N	61°10'07"W
6.	48°09'33"N	62°32'02"W

Note: When the geographic boundary of an area is expressed in Latitude and Longitude, these point references are based on the geodesic system North American Datum 1927 (NAD27)